

The Clayton Companies are taking our reputation for product design and development to a greener level, in helping you attain LEED™ Green Building Certification through the use of environmentally aligned concrete and block materials complementary to the traditional, non-recycled products in your integrated design.

We understand the importance of successfully achieving a viable integrated design and are striving to produce the materials which best fit that dynamic on a multitude of levels. We are achieving this by developing materials through a combination of research, technology and experience. Our new products have been created to satisfy the environmentally conditional building requirements of LEED™ while maintaining a high level of flexibility in their applications.

Like you, we continue to build upon knowledge relating to the ever-evolving standards set by regulators in helping to produce enduring structures that will best serve the dual purpose of practical design and environmental responsibility.

As one of New Jersey's best-known manufacturers and distributors of commercial building materials, the Clayton Companies—comprised of Clayton Block Co., Inc., and Ralph Clayton & Sons (concrete) and Clayton Sand Co.—are eager to join with you in becoming an integral part of your sustainable building designs.

Take the Lead.™

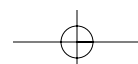


For more information, click or call Clayton today.

1-888-452-9348

www.claytonco.com

P.O. Box 3015 • Lakewood, NJ 08701



These Clayton concrete and block products can help projects meet LEED™ credit requirements and achieve LEED™ certification.



Use of our products can help you obtain credits toward LEED™ Green Building Certification. The LEED™ system was created to evaluate the effects of building design and construction on the environment.

The LEED™ rating system has 6 credit categories from which points can be earned toward certification. Clayton concrete and block products relate specifically to the following LEED™ credits:

- **SSc7.1: Landscape & Exterior Design to Reduce Heat Islands (Sustainable Sites Credits)**
- **EAc1: Optimize Energy Performance (Energy & Atmosphere Credits)**
- **MRC4: Recycled Content (Materials & Resources Credits)**
- **MRC5: Local/Regional Materials (Materials & Resources Credits)**
- **EQc4.2: Low-Emitting Materials (Indoor Environmental Quality Credits)**
- **Dc1: Innovation in Design (Innovation & Design Process Credits)**



Concrete

Produced throughout the state of New Jersey, Clayton concrete mixes contain flyash, a post-industrial, recycled material contributing to MRC4. Since the use of concrete is regional, project teams using this product will likely be located within 500 miles of where the concrete is manufactured and extracted, thus contributing to MRC5. Using concrete can also help earn SSc7.1, because concrete is a high-albedo material.

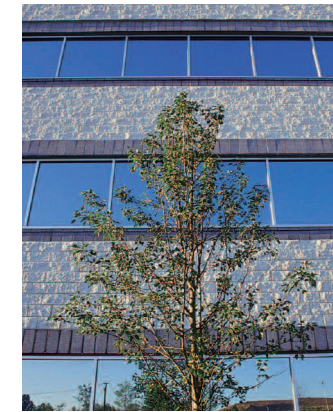


Grey Block

A high post-consumer recycled content, consisting of recovered block and concrete, makes Clayton's Grey Block a unique product, contributing to MRC4.

In New Jersey, Clayton's Grey Block is manufactured at these plants: Saddle Brook, North Arlington, Bayonne, Edison, Belmar/Wall, Lakewood and Barnegat. The materials are extracted in Edison, Belmar, Lakewood and Jackson, NJ, as well as in Lehigh Valley, PA.

Using Grey Block can help earn both points in MRC5 if the project is located within 500 miles of the manufacturing and extraction facilities.



Architectural Block: Split Face, Smooth Colored, Ground

Contributing towards earning MRC5, this block is manufactured at: North Arlington, Edison and Yardville, NJ. The materials are extracted in Jackson and Millington, NJ and Lehigh Valley, PA.

This block product can help earn both points in MRC5 if the project is located within 500 miles of the manufacturing and extraction locations.

Leadership in Energy & Environmental Design

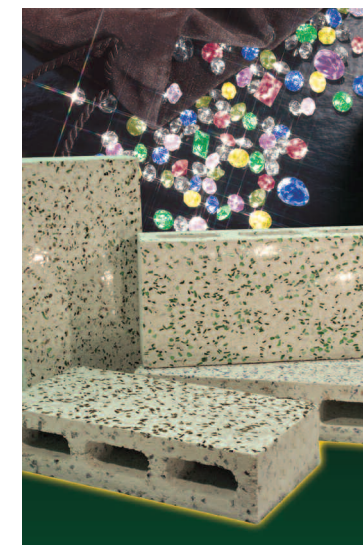


Architectural Block: Polished, Glazed

Both of these products are manufactured at the Clayton plant in Yardville, NJ and the materials are extracted in Northfield and Millington, NJ and Lehigh Valley, PA.

These products can help earn both points in MRC5 if the project is located within 500 miles of the manufacturing and extraction locations, as well as EQc4.2 by making use of paints and coatings for block unnecessary.

The reflective properties of these products can contribute towards improving energy performance as part of EAc1. Used in conjunction with other design elements, lighting design could be altered to lower the use of light fixtures, thereby lowering the heat generated by lighting, enabling HVAC systems to be downsized, improving energy performance.



Architectural Block: GlasStone™

One of Clayton's newest products, GlasStone™ is unique because of its recycled glass content. This product can help earn MRC4 due to its post-consumer recycled content and post-industrial recycled content. GlasStone™ can also contribute towards earning both points in MRC5 if the project is located within 500 miles of the manufacturing and extraction locations, and EQc4.2 by making use of paints and coatings for block unnecessary. GlasStone's™ reflective qualities could help improve energy performance as part of EAc1. By using this block in conjunction with other design elements, lighting design could be altered to reduce the use of light fixtures and the heat generated from them, enabling HVAC systems to be downsized and improving energy performance.

GlasStone™ is manufactured at the Clayton Plant in Yardville, NJ.

For more information, click or call Clayton today.

1-888-452-9348 • www.claytonco.com